

SECTION 4 CHARTS AND DIAGRAMS

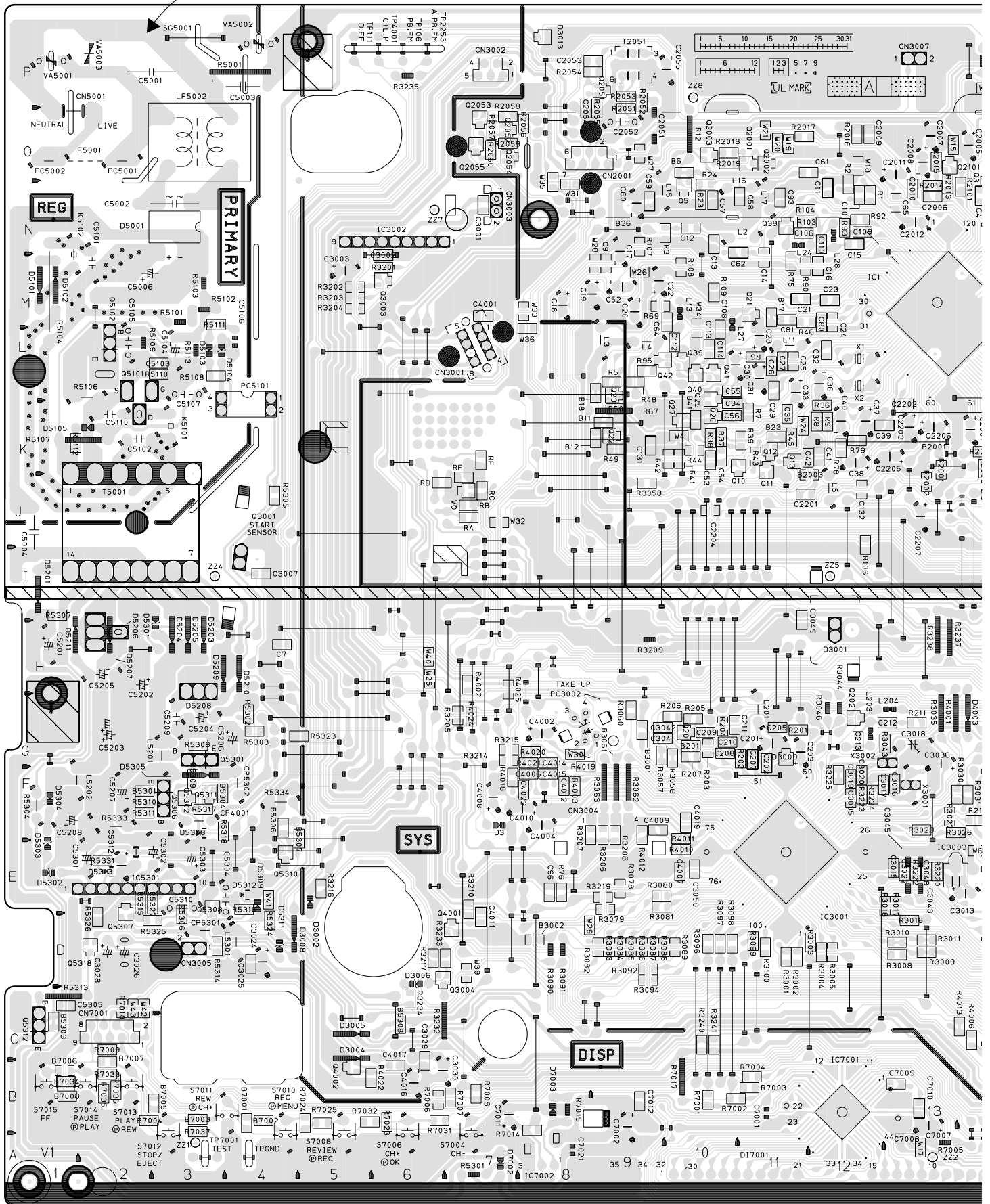
COMPONENT PARTS LOCATION GUIDE < MAIN >

REF.NO.	LOCATION	REF.NO.	LOCATION	REF.NO.	LOCATION	REF.NO.	LOCATION	REF.NO.	LOCATION	REF.NO.	LOCATION	REF.NO.	LOCATION	REF.NO.	LOCATION	REF.NO.	LOCATION																				
CAPACITOR																																					
C1	B	C	15N	C2003	A	D	14L	C5104	A	D	3L	CN7003	A	D	16A	L6002	A	D	22H	R71	B	C	16L	R3011	B	C	13D	R5104	A	D	1L	R7025	B	C	5B		
C2	B	C	15N	C2003	A	D	15M	C5105	A	D	2L	CN7101	A	D	21C	L6003	A	D	21O	R75	B	C	11M	R3012	B	C	15D	R5106	A	D	1L	R7030	B	C	15B		
C3	B	C	14N	C2005	A	D	14O	C5107	A	D	3L	CN7102	A	D	20L	L6032	A	D	22K	R76	B	C	8E	R3013	B	C	14D	R5107	A	D	2K	R7031	B	C	6B		
C4	B	C	14N	C2006	A	B	C	13N	C5110	A	D	2K				L6050	A	D	21N	R77	A	D	14P	R3014	B	C	15D	R5108	A	B	C	3L	R7032	B	C	5B	
C5	A	D	15N	C2007	A	D	13O	C5201	A	D	1H				D1	A	D	17P	R78	B	C	12K	R3015	B	C	15D	R5109	A	D	2L	R7033	B	C	2B			
C6	B	C	14N	C2008	A	D	13O	C5202	A	D	3H				D2	A	D	16P	R79	B	C	12K	R3016	B	C	13D	R5110	A	B	C	3L	R7034	B	C	1B		
C7	B	C	4H	C2009	B	C	12O	C5203	A	D	2G				D3	A	D	7F	Q1	B	C	11M	R3017	B	C	13E	R5111	B	C	3M	R7035	B	C	2B			
C8	B	C	17N	C2010	B	C	13N	C5204	A	D	2G				D4	A	D	16G	Q2	B	C	12N	R3018	B	C	13E	R5112	B	C	1K	R7036	B	C	2B			
C9	B	C	9M	C2011	A	D	13O	C5205	A	D	2H				D5	A	D	16G	Q3	B	C	9L	R3020	B	C	15D	R5301	A	D	7A	R7040	B	C	16A			
C10	B	C	12N	C2012	A	D	13N	C5206	A	D	4G				D2001	A	D	17N	Q4	B	C	11N	R3017	B	C	14D	R5302	A	D	4G	R7041	B	C	15A			
C11	B	C	12N	C2051	A	D	9O	C5207	A	D	2F				D2201	A	D	16L	Q5	B	C	11N	R3022	B	C	14E	R5303	A	D	4G	R7202	B	C	19L			
C12	B	C	10N	C2052	A	D	9O	C5208	A	D	1F				D2202	A	D	16L	Q10	B	C	12J	R3026	B	C	13F	R5304	A	D	1F	R7203	B	C	19L			
C13	B	C	10N	C2053	B	C	9P	C5209	A	D	3G				D3001	A	D	12H	Q11	B	C	9N	R3027	B	C	13F	R5305	B	C	4J	R7204	A	D	19L			
C14	B	C	11M	C2054	B	C	8O	C5301	A	D	2E				D3002	A	D	5D	Q12	B	C	10M	R3029	B	C	13F	R5306	B	C	3D							
C15	B	C	12N	C2055	A	D	10P	C5302	A	D	3E				D3004	A	D	5C	Q13	B	C	10M	R3029	B	C	13F	R5306	B	C	3D							
C16	B	C	12M	C2201	B	C	11J	C5303	A	D	3E				D3005	A	D	5C	Q21	B	C	11M	R3030	B	C	14F	R5307	B	C	11							
C17	A	D	9M	C2202	B	C	13K	C5304	A	D	4E				D3006	A	D	6D	Q22	B	C	11G	R3031	B	C	14F	R5308	B	C	3G	S3001	A	D	18C			
C18	A	D	8M	C2203	A	D	13K	C5305	B	C	1C				D3007	B	C	16D	Q23	B	C	9L	R3035	A	D	13H	R5309	B	C	3F	S6050	A	D	18P			
C19	A	D	9M	C2204	B	C	10J	C5306	A	D	2H				D3008	A	D	4E	Q25	B	C	10G	R3043	A	D	12G	R5310	B	C	2F	S7002	A	D	18B			
C20	A	D	9M	C2205	A	D	13K	C5307	A	D	2G				D3009	B	C	11G	Q26	B	C	10G	R3044	A	D	12G	R5311	B	C	2F	S7004	A	D	7B			
C21	B	C	11M	C2206	A	D	13K	C5310	A	D	2E				D3013	B	C	8P	Q27	B	C	10G	R3046	A	D	12G	R5313	A	D	1C	S7006	A	D	6B			
C22	A	D	9M	C2207	A	D	13J	C5312	A	D	2E				D3015	B	C	17B	Q32	B	C	10G	R3056	B	C	10G	R5314	B	C	3D	S7008	A	D	5B			
C23	B	C	12M	C2208	A	D	14K	C5321	B	C	18A				D4003	A	D	14H	Q35	B	C	10F	R3057	B	C	9G	R5315	B	C	2E	S7010	A	D	4B			
C24	B	C	12M	C2209	A	D	14K	C6005	A	D	21L				D5001	B	C	3N	Q38	B	C	11N	R211	B	C	9G	R5317	B	C	3F	S7011	A	D	4B			
C25	B	C	11L	C2210	A	D	15K	C6006	B	C	22M				D5101	A	D	1M	Q39	B	C	10L	R401	B	C	15O	R3061	A	D	9G	R5318	B	C	3F			
C26	B	C	11L	C2211	A	D	15K	C6007	A	D	21M				D5102	A	D	1M	Q40	B	C	10L	R402	B	C	16O	R3062	A	D	9G	R5319	B	C	22F			
C27	B	C	11L	C2212	A	D	15K	C6008	B	C	22M				D5103	A	D	3L	Q41	B	C	10L	R403	B	C	16O	R3063	A	D	9G	R5323	B	C	5G			
C28	A	D	11L	C2215	A	D	15K	C6012	A	D	21O				D5104	A	D	3L	Q42	B	C	9L	R404	B	C	16O	R3078	B	C	9E	R5324	B	C	4D			
C29	A	D	11L	C2216	A	D	15L	C6013	B	C	22O				D5105	A	D	2K	Q201	B	C	10G	R405	B	C	16O	R3079	B	C	9E	R5325	B	C	3D			
C30	A	D	10L	C2217	A	D	15L	C6014	B	C	21P				D5201	A	D	1I	Q202	B	C	12G	R406	B	C	16O	R3080	B	C	9E	R5326	B	C	2D			
C31	A	D	11L	C2218	A	D	15L	C6020	B	C	22N				D5203	A	D	3I	Q401	B	C	15O	R407	B	C	16O	R3081	B	C	9E	R5327	B	C	3E			
C32	A	D	12L	C2219	A	D	16L	C6021	B	C	22N				D5204	A	D	3I	Q402	B	C	16O	R408	B	C	16O	R3082	B	C	9E	R5331	B	C	2E			
C33	A	D	11L	C2220	A	D	16M	C6022	B	C	22N				D5205	A	D	3I	Q403	B	C	17O	R901	B	C	21P	R3083	B	C	9D	R5333	A	D	2F			
C34	A	D	10K	C2221	B	C	16M	C6023	B	C	22M				D5206	A	D	2H	Q404	B	C	16N	R902	B	C	21P	R3084	B	C	9D	R5334	A	D	4F			
C35	A	D	11K	C2222	A	D	16M	C6031	A	D	21J				D5207	A	D	2I	Q405	B	C	16O	R903	B	C	20M	R3085	B	C	9D	R6020	B	C	21N			
C36	A	D	12L	C2223	A	D	16M	C6033	B	C	22L				D5208	A	D	3H	Q901	B	C	20N	R904	A	D	20N	R3086	B	C	9D	R6021	B	C	21M			
C37	A	D	12K	C2224	B	C	16M	C6052	B	C	22O				D5209	A	D	3H	Q902	B	C	20N	R905	A	D	20M	R3087	B	C	9D	R6022	B	C	21N			
C38	A	D	12K	C2225	A	D	16M	C6053	B	C	22P				D5210	A	D	4H	Q2001	B	C	11O	R911	B	C	20M	R3088	B	C	9D	R6023	B	C	21M			
C39	A	D	13K	C2226	A	D	15M	C6501	A	D	19H				D5211	A	D	1H	Q2002	B	C	11O	R912	B	C	20M	R3089	B	C	10D	R6025	B	C	15D			
C40	A	D	12K	C2227	A	D	15M	C6502	B	C	19H				D5301	A	D	3I	Q2003	B	C	10O	R2001	B	C	21B	R3090	B	C	10D	R6026	B	C	21N			
C41	B	C	12K	C2251	A	D	15N	C6503	A	D	19H				D5302	A	D	1E	Q2051	B	C	9P	R2002	B	C	13K	R3099	A	D	8D	R6030	B	C	21J			
C42	B	C	11K	C2252	A	D	15M	C6504	A	D	18H				D5303	A	D	1E	Q2052	B	C	7O	R2003	B	C	14K	R3092	B	C	9D	R6031	B	C	22K			
C44	B	C	15N	C2253	B	C	16N	C6505	A	D	20H				D5304	A	D	1F	Q2053	B	C	7O	R2004	B	C	14K	R3094	B	C	9D	R6032	B	C	21L			
C51	A	D	16G	C2254	B	C	15N	C6506	A	D	17H				D5305	A	D	3F	Q2054	B	C	7O	R2005	B	C	16K	R3096	B	C	10D	R6033	B	C	21L			
C52	A	D	9M	C3001	B	C	7N	C6507	B	C	18H				D5308	B	C	3F	Q2055	B	C	7O	R2006	B	C	16K	R3097	B	C	10D	R6034	B	C	21J			
C53	B	C	10K	C3002	B	C	6M	C6508	A	D	17H				D5309	A	D	4D	Q2101	B	C	13O	R2007	B	C	16K	R3098	B	C	10D	R6050	A	D	2O			
C54	B	C	10K	C3003	A	D	5M	C6509	B	C	18H				D5311	A	D	4D	Q2251	B	C	17M	R2008	B	C	15K	R3099	B	C	11D	R6051	B	C	21N			
C55	B	C	10L	C3007	B	C	4I	C6510	A	D	17G				D5312	B	C	4E	Q3001	A	D	4I	R2009	B	C	16K	R3100	B	C	11D	R6052	B	C	19I			
C56	B	C	10K	C3008	B	C	20I	C6511	A	D	18F				D5313	B	C	2E	Q3002	A	D	19I	R2010	B	C	16K	R3201	B	C	6M	R6053	B	C	19N			
C57	B	C	10N	C3013	A	D	14E	C6512	A	D	19G				D6002	A	D	21L	Q3003	B	C	6M	R2011	B	C	16M	R3202	B	C	5M	R6238	B	C	15P			
C58	B	C	11N	C3015	B	C	13E	C6513	A	D	20G				D6551	A	D	20J	Q3004	B	C	6D	R2012	B	C	17M	R3203	B	C	5M	R6239	B	C	16P			
C59	B	C	9N	C3016	B	C	13F	C6514	A	D	20G				D6650	B	C	21E	Q3005	B	C	17E	R2013	B	C	13N	R3204	B	C	5M	R6501	B	C	18H			
C60	A	D	9N	C3017	B	C	13F	C6515	A	D	18G				D7002	A	D	7A	Q4001	B	C	7D	R2014	B	C	13N	R3205	B									

4.1 MAIN, R.PAUSE, A/C HEAD, LOADING MOTOR, SHUTTLE AND C.BOX CTL CIRCUIT BOARDS

<03>MAIN
LPB10088-003A

DANGEROUS VOLTAGE

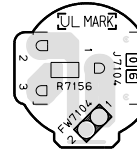




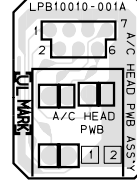
•CAUTION
FOR CONTINUED PROTECTION AGAINST
FIRE HAZARD, REPLACE ONLY WITH SAME
TYPE AND RATED FUSE(S).

•ATTENTION:
POUR UNE PROTECTION PERMANENTE
CONTRE LES RISQUE D'INCENDE,
REPLACER LES FUSIBLES PAR UN AUTRE
DE MEME TYPE ET DE MEME TENSION.

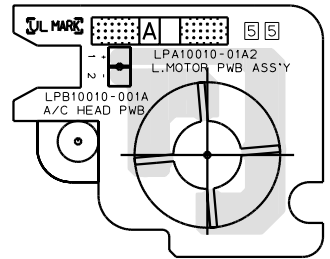
<06>R.PAUSE
LPB10088-003A



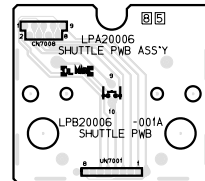
<12>A/C HEAD
LPB10010-001A



<55>LOADING MOTOR
LPB10010-001A



<85>SHUTTLE
LPB20006-001A



<92>C.BOX CTL
LPB10088-003A

